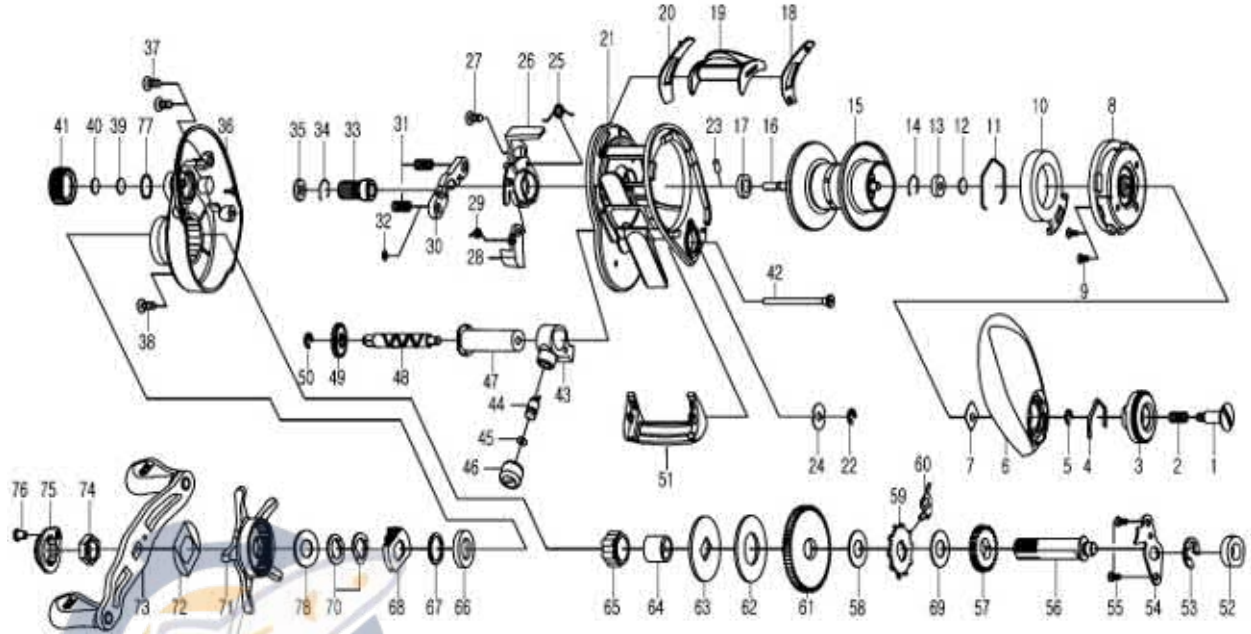




BAITCASTING REEL

AIR 100HLA / 100HSLA

Please order by parts number, not key number
Veuillez indiquer le numéro de la pièce (Non "Key" No.)



Key No.	Part No.	Part Name	Key No.	Part No.	Part Name
1	460-5410	SET PLATE SCREW	44	400-2540	LINE GUIDE PAWL
2	510-4450	SET PLATE SPRING	45	540-3980	WASHER (C)
3	550-1611	BRAKE ADJ KNOB	46	380-0780	LINE PAWL CAP
4	510-5060	BRAKE CLICK SPRING	47	270-0720	LEVEL WIND GUARD
5	200-0530	BRAKE DIAL RETAINER (A)	48	470-2140	WORM SHAFT
6	230-2721	R/S PLATE	49	240-2180	WORM SHAFT GEAR
7	410-1911	BRAKE DIAL RETAINER (B)	50	200-0530	GEAR RETAINER
8	220-3011	SET PLATE	51	550-1771	FRONT PLATE
9	460-7080	SCREW	52	140-1850	BALL BEARING (C)
10	240-1952	MAGNET HOLDER	53	200-0580	DRIVE GEAR SHAFT RET (B)
11	430-1070	MAGNET HOLDER RET RING	54	410-2210	DRIVE GEAR SHAFT RET (A)
12	540-7170	SPACER (A)	55	460-1860	SCREW
13	160-1650	BALL BEARING (A)	56	470-2480	DRIVE SHART
14	430-1061	BEARING RETAINER	57	240-2190	DRIVE GEAR
15-17, 23	700-9760	SPOOL ASSEMBLY	58	540-6840	DRIVE SHAFT WASHER
18	410-2150	CLUTCH LEVER PLT (B)	59	240-2530	A/R RATCHET
19	090-0261	CLUTCH LEVER	60	530-0840	A/R PAWL
20	410-2140	CLUTCH LEVER PLT ©	61	250-1323	DRIVE GEAR
21	110-2091	FRAME ASSEMBLY	62	540-6880	DRAG WASHER
22	200-0530	RETAINER	63	540-6910	KEY WASHER
23	400-2250	SPOOL PIN	64	150-2280	GEAR SHAFT COLLAR
24	540-6060	WORM SHAFT WASHER	65	140-1810	ROLLER CLUTCH
25	510-5400	CLUTCH CAM SPRING (A)	66	140-0610	BALL BEARING (D)
26	170-1330	CLUTCH CAM	67	540-6250	SPACING WASHER
27	460-5440	SCREW	68	510-5370	CLICK LEAF SPRING HOLDER
28	330-2830	CLUTCH TRIP PLATE	69	540-7010	LEAF SPRING (A)
29	510-5080	CLUTCH CAM SPRING (B)	70	540-6390	DRAG SPRING WASHER
30	410-1920	YOKE	71	320-1271	STAR DRAG
31	510-4770	YOKE SPRING	72	510-3260	LEAF SPRING (B)
32	540-6020	WASHER (B)	73	700-8770	HANDLE ASSEMBLY
33	260-1690	PINION GEAR	74	380-0880	HANDLE NUT
34	430-1061	BEARING RETAINER	75	180-2471	HANDLE NUT PLATE
35	150-3020	BALL BEARING (B)	76	460-0450	SCREW
36	230-2712	L/S PLATE	77	430-1080	O-RING
37	460-1570	SCREW	78	540-9020	WASHER (D)
38	460-5450	SCREW			
39	540-6850	SPACER (D)			
40	540-4340	SPACER (E)			
41	380-2020	CAST CONTROL CAP			
42	400-2531	LONG SCREW			
43	490-1080	LINE GUIDE			
			44	400-2540	LINE GUIDE PAWL
			45	540-3980	WASHER (C)
			46	380-0780	LINE PAWL CAP
			47	270-0720	LEVEL WIND GUARD
			48	470-2140	WORM SHAFT
			49	240-2180	WORM SHAFT GEAR
			50	200-0530	GEAR RETAINER
			51	550-1771	FRONT PLATE
			52	140-1850	BALL BEARING (C)
			53	200-0580	DRIVE GEAR SHAFT RET (B)
			54	410-2210	DRIVE GEAR SHAFT RET (A)
			55	460-1860	SCREW
			56	470-2480	DRIVE SHART
			57	240-2190	DRIVE GEAR
			58	540-6840	DRIVE SHAFT WASHER
			59	240-2530	A/R RATCHET
			60	530-0840	A/R PAWL
			61	250-1323	DRIVE GEAR
			62	540-6880	DRAG WASHER
			63	540-6910	KEY WASHER
			64	150-2280	GEAR SHAFT COLLAR
			65	140-1810	ROLLER CLUTCH
			66	140-0610	BALL BEARING (D)
			67	540-6250	SPACING WASHER
			68	510-5370	CLICK LEAF SPRING HOLDER
			69	540-7010	LEAF SPRING (A)
			70	540-6390	DRAG SPRING WASHER
			71	320-1271	STAR DRAG
			72	510-3260	LEAF SPRING (B)
			73	700-8770	HANDLE ASSEMBLY
			74	380-0880	HANDLE NUT
			75	180-2471	HANDLE NUT PLATE
			76	460-0450	SCREW
			77	430-1080	O-RING
			78	540-9020	WASHER (D)
AIR 100HSLA SPECIAL PARTS					
Key No.	Part No.	Part Name	Key No.	Part No.	Part Name
33	260-1701	PINION GEAR	36	230-2713	L/S PLATE
51	550-1771	FRONT PLATE	61	250-1324	DRIVE GEAR